

50th year

DATASHEET



B

SERIES

COMPACT ENCLOSURES

WITH MOUNTING PLATE

INDOOR

CRS

DATASHEET

B SERIES

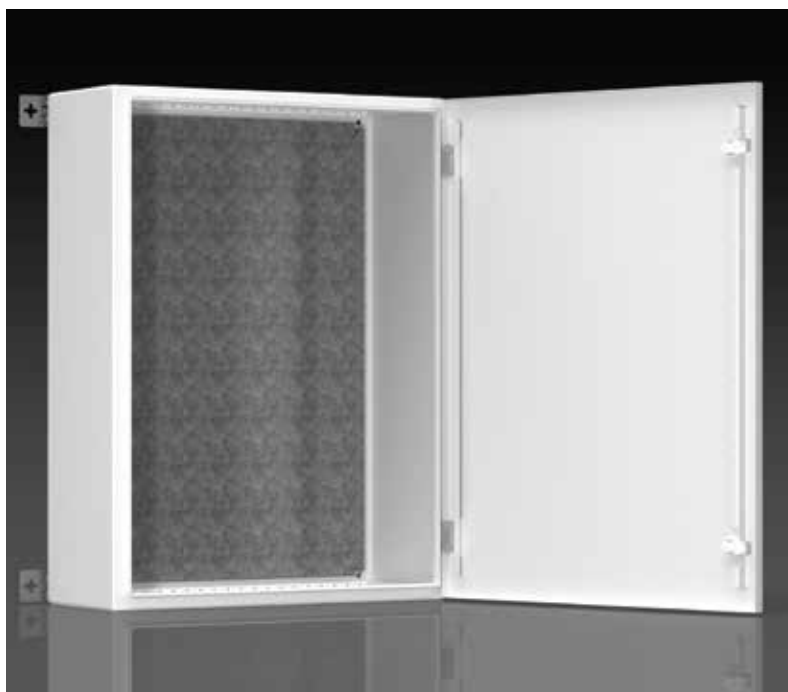


COMPACT ENCLOSURES

WITH MOUNTING PLATE

INDOOR

CRS



DIMENSIONS

WIDTH mm	HEIGHT mm	DEPTH mm
300	400	200
400	500	300
500	600	400
600	700	
700	800	
800	1000	
	1200	

MATERIAL DETAILS	THICKNESS	MATERIAL	COATING
Enclosure Frame	1,00 - 1,50 mm	CRS	7035
Door	1,00 - 1,50 mm	CRS	7035
Bottom Plate	1,50 mm	CRS	7035
Top Plate	1,50 mm	CRS	7035
Back Mounting Plate	1,50 mm	275 gr/m ² Galvanized CRS	Unpainted

OPTIONAL DETAILS	THICKNESS	MATERIAL	COATING
Plinth	2,00 mm	CRS	U740V8B

DATASHEET

B SERIES

yespan®

COMPACT ENCLOSURES

WITH MOUNTING PLATE

INDOOR

CRS

PROTECTION CLASS

: IP66

IK CODE

: IK10

SURFACE TREATMENT

: Nanoceramic coating

COATING

: Ral 7035 wrinkle UV resistive polyester powder coating

LOCK

: Quarter Turn Lock with DB key

HINGES

: Hidden hinges, zinc coated.
130° opening angle

INSETS

: Door earthing cable (1 piece for each door)

GTIP CODE

: 8538.10.00.00.00

CERTIFICATES

: IEC 62208-TSE
IP66 Test
IK10 Test
EAC Certificate
RED Certificate

DECLARATIONS

: CE Declaration of Conformity

YESPAN ELEKTRİK SANAYİ VE TİCARET LTD. ŞTİ.

Head Office : Umurlu mahallesi Aydın OSB 2.Cadde No:41 09630 Efeler / AYDIN - TÜRKİYE
Phone : +90.256. 211 56 56 pbx • info@yespan.com

Branch : Perpa Ticaret Merkezi A Blok Kat: 11 No: 1667 Şişli / İSTANBUL - TÜRKİYE

